

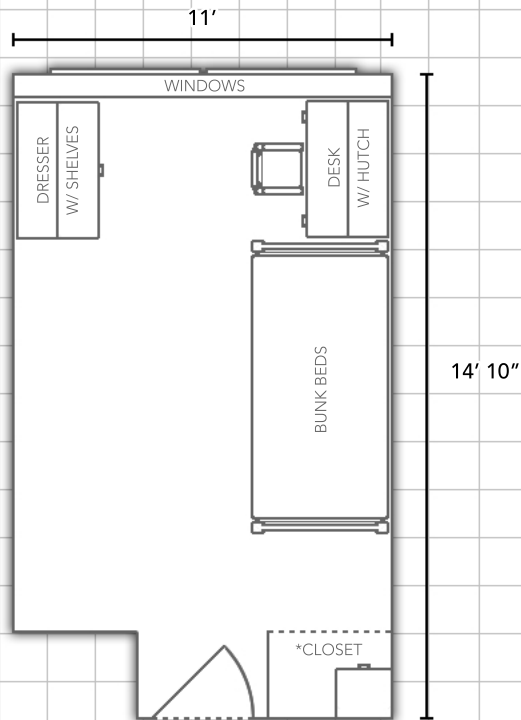
TAYLOR HALL

Information available at WWW.EIU.EDU/HOUSING



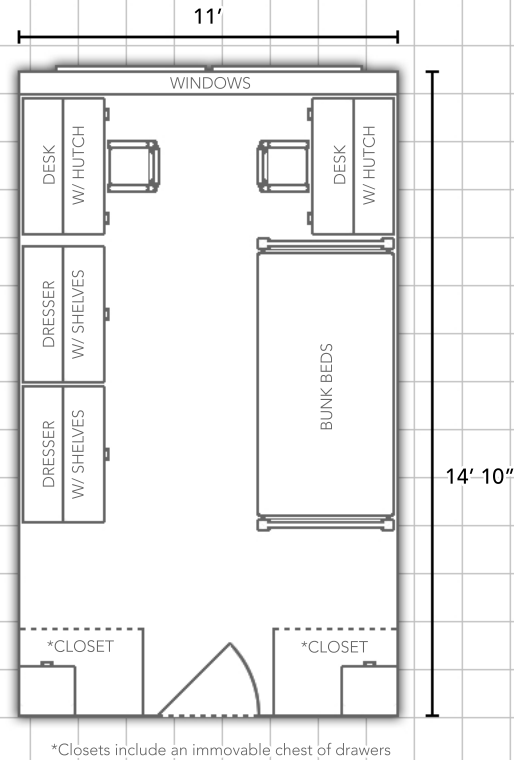
Physical Single Room:

(Rooms 104, 153, 204, 253, 304, 353, 404, 453, 504, and 553)



*Closet includes an immovable chest of drawers

Double Room:



*Closets include an immovable chest of drawers

Department:



Bedding:

Bedding in all rooms measure
80" X 39" (x-long twin)

Furnishings:

Rooms are carpeted and feature
stackable, loftable and
bunkable furniture

Miscellaneous:

Layouts are not to scale