

Our Team

Misty Edwards-Director

217-581-7261 / mmedwards2@einu.edu

Melissa Coleman-Higher Education and Workforce Development Navigator

217-581-6991 / mdcoleman@einu.edu

Shelli Blair-Training Coordinator/Provider Services/ Smart Start Grant Local Expert

217-581-5790 / srblair@einu.edu

Vicky Foster-Infant Toddler Specialist

217-581-8359 / vfoster2@einu.edu

Lori Rothrock-Quality Specialist

217-581-7954 / ljrothrock@einu.edu

Tatum Ervin-Referral Specialist/Data Specialist/ CCAP Eligibility Specialist

217-581-1110 / tmervin2@einu.edu



Child Care Assistance Program (CCAP):

Lindsay Howell-CCAP Coordinator

217-581-7083 / ccap@einu.edu

- Covers the counties of Clark, Coles (A-C), Cumberland, Edgar, Moultrie and Shelby

Michelle Justice-CCAP Eligibility Specialist

217-581-7082 / ccap@einu.edu

- Covers the county of Coles (D-Z)

Daphne Boley-Health & Safety Coach

217-581-7262 / dboley@einu.edu

Main CORE Line: 217-581-6698

Main CCAP Line: 217-581-7081

Fax Number: 217-581-7084

CCAP Email: ccap@einu.edu

Mailing Address:

600 Lincoln Avenue
Charleston, IL 61920

Physical Address:

2201 9th Street
Ninth St. Hall 3rd Floor/Room 3015
Charleston, IL 61920

OFFICE CLOSURES

**September 1
November 27-28
December 24-31**

Check out our
website for the latest
info, forms, and more!!



www.einu.edu/ccrr



Follow us on Facebook to learn
about training and conference
opportunities, early childhood and
community events and more!

CCAP News/Policy Updates 07/01/25

- **Personal Leave**-HOME Providers may request personal leave up to 3 days in a calendar year
 - Days cannot be carried over to the next calendar year
 - Must be submitted in writing using the Personal Leave Request (PLR) form (CURRENTLY BEING FINALIZED)
 - Paid leave payment will be included on the next CCAP payment
- **Child Care Payment Rates** have been updated (see below)
- **Income Guidelines** have been updated (see below)
- Families have **30 days** to report changes to their current information
- Families may apply for CCAP up to **90 calendar days** before the start date of care
- **Registration Fees**-Licensed and License-Exempt Child Care Centers can now be reimbursed for the registration fee for any family approved for CCAP
 - The maximum fee CCAP will pay will be \$50.00 for a single child and \$100.00 for families with multiple children
- Providers may charge the state a **HIGHER** rate (not exceeding the state max) than they charge private pay families or vice versa
- **ONLINE** application coming soon! 🙄

Income Guidelines

Effective 07/01/25

Family Size 2	3,966
Family Size 3	4,997
Family Size 4	6,028
Family Size 5	7,059
Family Size 6	8,091
Family Size 7	9,122
Family Size 8	10,153
Family Size 9	11,184
Family Size 10	12,216

Child Care Provider Rates

Effective 07/01/25

	Under Age 2 Full Day/ Part Day	Age 2 Full Day/ Part Day	Age 3 Full Day/ Part Day
Licensed Center	\$57.00/ \$29.00	\$46.00/ \$23.00	\$40.00/ \$20.00
Licensed Exempt Center			\$33.00/ \$17.00
Licensed Home/ Group Home	\$46.66/ \$23.33	\$43.26/ \$21.63	\$39.63/ \$19.82
License-Exempt Home Relative and Non-Relative All Children Full Day/Part Day			\$25.76/ \$12.88

CCAP Payments Tips

Call the Payment Information Line: 217-524-9041

- Provides recorded, general information about child care payments, such as monthly certificate mailing dates, how to access Comptroller's website for payment approvals, holiday updates and impacts on payment issue dates, etc.

Visit the Illinois Comptroller website at illinoiscomptroller.gov

- Allows State of Illinois vendors and commercial payees to view and download detailed, non-confidential remittance information for payments issued by the State of Illinois.
 - Click on Vendor Services
 - Click on Vendor Payments
 - Enter your Vendor TIN (SSN) and your name (Last, First)
 - Complete the security verification
 - Click Submit



Sign up for Enhanced Vendor Remittance (BEST OPTION)

- Allows providers to quickly and easily view and/or download detailed payment information issued by the Office of the Comptroller. To sign up go to: illinoiscomptroller.gov
 - On the home page, click on VENDORS SERVICES
 - Go to The Enhanced Vendor Remittance Area
 - Click the blue box: "Register"
 - Complete the registration page
 - Within 24 hours, an email should be sent with instructions on creating a password to view the detail of the payments.
 - When password has been created, go back into: illinoiscomptroller.gov
 - Click on Vendor Services
 - Go to: Enhanced Vendor Remittance
 - Enter User ID
 - Enter Password
 - Click: Login
 - On the next page click: Payments
 - Then click: Find Warrants- In this area providers can adjust the fiscal year, and/or the beginning and ending date of their search.
 - Next page will show the most recent issued payments at the top of the page. Click on one of the Warrant/EFT#'s
 - Next page will give a lot of detail on the payment, including the Payment Voucher Description (all the specific case information of the payment)

Sign up for Direct Deposit: Call 217-557-0930

License-Exempt Health & Safety Training Reminders

To receive CCAP payments you **MUST** complete the **REQUIRED** trainings:

In the **FIRST 90 DAYS** of becoming a CCAP provider:

- Become a Gateways Registry Member - registry.ilgateways.com
- Complete Mandated Reporter Training - mandatedreporter.dcf.illinois.gov
- Complete Pediatric CPR & First Aid Trainings - eiu.edu/ccrr/training
- Complete Child Development, Health, and Safety Basics Training OR
- Complete ECE Level 1 training-Tier 1 (Mod. 1, 2a, 2b, 2c) - courses.inccrra.org

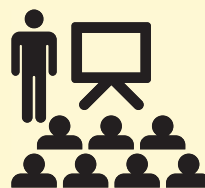
For more information, please visit our website at www.eiu.edu/ccrr or contact **Daphne** at 217-581-7262

Interested in going to college and earning a credential or degree in Early Childhood?



Many supports are available and our Higher Education and Workforce Development Navigator can help you access them!

Contact Melissa at 217-581-6991 or mdcoleman@eiu.edu



Training Updates

The Fall 2025 Training Calendar is available on our website!

We have both a printable and online version available.

Funds are Available!

CPR & First Aid Funds

---100% reimbursement



Individual Professional Development Funds

---80% reimbursement of expenses associated with eligible professional development training and credentials

Applications and information are available on our website

Provider Update Forms Coming Soon!

Don't forget to return your business update forms once you receive them!

If you want to complete the update over the phone, please contact our office at 217-581-6698



There is a critical shortage of Family Child Care Providers in our communities and we need your help to spread the word! If you know someone who would love to make a career out of caring for children, they can contact **Shelli** at 217-581-5790 or sblain@eiu.edu to find out how to get started!



GRANT OPPORTUNITIES

SMART START GRANTS

Available to programs who enrolled 15% or more of the programs licensed capacity with children in the Child Care Assistance Program (CCAP).

--If you receive child care payments from DCFS for caring for a foster child, they will be included in the 15% CCAP enrollment requirement.



Round 3: January 2026-March 2026

Applications available October 1, 2025 – October 31, 2025

Round 4: April 2026-June 2026

Applications available January 2, 2026 – January 31, 2026

You can find more information at www.ilgateways.com/smart-start or if you have questions or need help completing the application you may contact Shelli at 217-581-5790.

Don't miss out on this exciting opportunity to supplement your income!



QUALITY IMPROVEMENT FUNDS

The Quality Improvement (QI) Funds have been developed to assist and support child care programs that are choosing to achieve a Circle of Quality above the Licensing level.

Quality Improvement Funds assist child care programs with:

- Achieving a Bronze, Silver or Gold Circle of Quality
- Achieving National Accreditation
- Advancing to a Bronze, Silver or Gold Circle of Quality
- Maintaining a Silver or Gold Circle of Quality



Watch for the Quality Improvement Funds application on our website in the near future!

Teacher Qualification Resource

Do you have staff working on their
Child Development Associate (CDA) or the
Certified Childcare Professional (CCP)
to become teacher qualified?

EIU CCR&R can help!



Vicky Foster is a Professional Development Specialist for CDA and
Melissa Coleman and Lori Rothrock are Field Counselors for the CCP.

Contact Melissa, Higher Education and Workforce Development Navigator
at mdcoleman@ein.edu for more information or to get started!

Infant Toddler Environment Rating Scale 3

Illinois Department of Human Services and ExceleRate Illinois have made the decision to change from ITERS-R to ITERS-3. This will affect all programs with a Circle above Licensed and any program wishing to participate in ExceleRate Illinois in the future.

Current ExceleRate Illinois Centers will receive 2 copies of the ITERS-3 to get your program started on this transition. Any additional Scales needed are the programs responsibility, as Scales will not be provided moving forward. It would also be beneficial for the program to have a copy of the **All About ITERS-3**.

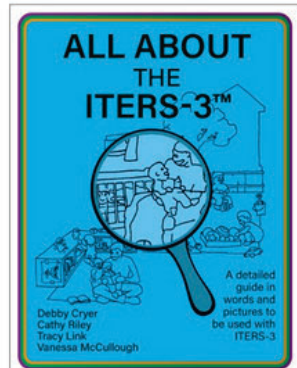
New staff needing the Intro to ERS will be taking the new training **“How ERS Works”** online.

The training schedule will be announced and dates will be posted on the Gateways Statewide training calendar.

“Making ITERS - 3 Work for You”

Zoom Dates: 8/13/25 and 9/24/25

Please be watching your email for
registration details.



QRIS: Quality Recognition and Improvement System

ExceleRate Illinois

ExceleRate Illinois gives early care and education programs a process for pursuing quality efforts that will help them learn more, do better, and improve developmental skills of the children they impact. It provides standards, guidelines, resources and supports to help early childhood professionals make sensible changes that lead to better quality outcomes. It provides a framework for continuous quality improvement in programs and recognizes a programs quality achievements. ExceleRate Illinois includes four circles of quality: Licensed, Bronze, Silver and Gold.

The ITCCS, Vicky Foster, and the QS, Lori Rothrock continue to visit program classrooms and administrative staff to offer technical assistance and support on the ERS tools; ITERS R, ECERS 3, SACERS, FCCERS, PAS, and BAS. We are available to visit your center or family child care to offer assistance with improving the quality of your program.

To find out more about the **ExceleRate Illinois** program and the **Circles of Quality**, or to schedule a visit please contact

Lori Rothrock, Quality Specialist
ljrothrock@eiu.edu or 217-581-7954

You can also visit the website to learn more:
exceleRateillinoisproviders.com



ExceleRate IL Bronze/Silver/Gold Programs

Licensed Centers

Cornerstone Christian Academy-Silver Circle of Quality

Charleston Community Early Learning Center-Silver Circle of Quality

Little Leaders Childcare Lab-Bronze Circle of Quality

The Little School House-Bronze Circle of Quality

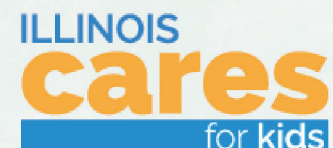
Family Child Care Providers

Pamela Jones from Gays, IL-Bronze Circle of Quality

Sally Risley from Sullivan, IL-Bronze Circle of Quality

THANK
you

To view the rating for more local programs
such as **Preschool For All** and **Head Start**
visit www.illinoiscaresforkids.org

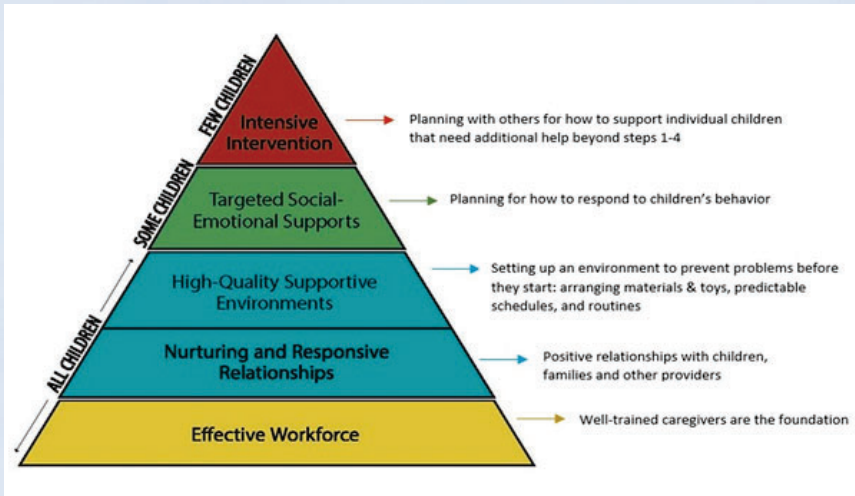


*We appreciate all of the hard work the Early Childhood Professionals
do to provide quality care to the children and families they serve!*

Pyramid Model

The **Pyramid Model** is a conceptual framework of evidence-based practices for supporting the social and emotional development of infants and young children.

There are 6 modules for the Preschool component and are offered this fall, the description of the modules along with the dates and times they are offered are in the training calendar.



For more information about the Pyramid Model
contact Lori Rothrock at
ljrothrock@eiu.edu
or 217-581-7954
or visit the website at
challengingbehavior.org

Search these Illinois websites for more information!



EIU Child Care Resource & Referral - eiu.edu/ccrr

Learn about the Child Care Assistance Program, quality child care, licensing and training information, training and professional development, quality initiatives as well as services provided by our Infant Toddler Child Care Specialist, Quality Specialist, and our Higher Education/Workforce Development Navigator



DCFS Sunshine Website - sunshine.dcf.illinois.gov

Review information on licensing standards, investigation actions, the background check portal, becoming licensed, licensed provider lookup, early childhood education, ExceleRate, Gateways, Director Portal and more



Illinois Department of Early Childhood - oecd.illinois.gov

Find provider resources and tools, supports for families, racial/equity efforts and resources, early learning council committees, Governor's newsletter and briefings, workforce and professional development support and other information from the Department of Early Childhood



Illinois Cares For Kids - illinoiscareforkids.org

Find child care programs, family resources to help with financial assistance, food, and good health, as well as information on child development and the emotional well being of children



Our Mission

The mission of Eastern Illinois University Child Care Resource and Referral (CCR&R) is to assist families in accessing affordable, quality child care, as well as, promoting and supporting child care providers' professional development to enhance quality child care in our community.

Serving the counties of Clark, Coles, Cumberland, Edgar, Moultrie, and Shelby



Eastern Illinois University Child Care Resource and Referral
is funded by the Illinois Department of Human Services.

